

ܐܘܪܝܝܢܐ ܕܚܘܪܝܢܐ

ASSYRIAN ALPHABET BY



Dalath



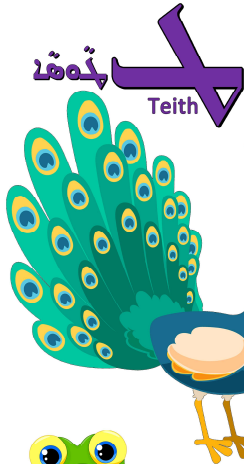
Gamal



Beth



Alep



Teith



Kheith



Zayn



Waw



Heh



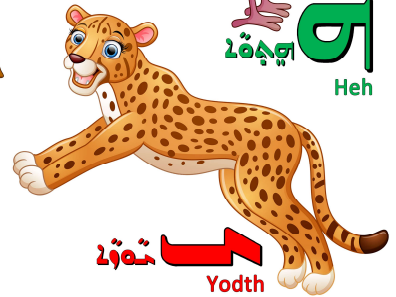
Meem



Lamadth



Kap



Yodth



Sadeh



Peh



Eh



Semkath



Noon



Taw



Sheen



Resh



Qop